



Labor Management
Health Care Coalition
of the Upper Midwest

A Special Transplant Resource for the



International Brotherhood of Electrical Workers

Local 292

Minneapolis & St. Cloud, MN

Mpls 612-379-1292 or 800-337-8310 St. Cloud 320-253-1292



Members, Retirees and Dependents



**Health Systems
Management, Inc.**

Labor Management Coalition of the Upper Midwest

This Resource is for Members, Retirees, and Families

This booklet describes a new resource developed for members, retirees and their families.

The purpose of this resource is to help members, retirees, and their families receive the highest quality care when faced with a serious medical condition that might require an organ or bone marrow/stem cell transplant.



Completely Voluntary and Completely Confidential

Use of this confidential resource is voluntary. You can choose to use the resource at any time, including in the following situations:

- ***When you or someone in your immediate family has a serious medical condition that could potentially result in the need for an organ, bone marrow or stem cell transplant. For example: If there is a possibility that your heart, kidneys, liver, or lungs might fail.***
- ***Perhaps you (or a family member) were recently told by a doctor that you have cancer. Or possibly you were diagnosed with cancer but have not been treated; maybe surgery (e.g., a biopsy) is needed to find out whether you have cancer.***

- ***You are a diabetic and have difficulty controlling your diabetes with medication. Perhaps you have kidney or eye problems that are related to your diabetes.***

The very best time to use this resource is immediately after your doctor first reports that you have a serious illness that demands treatment.



How This Resource Can Help

If you or someone in your family has a serious medical condition that could potentially result in need for a transplant, HSM will help you identify medical experts who can assist in the following ways.

- ***Help you make sure the diagnosis is correct.***

Up to 40 percent of cancer patients have their diagnosis and/or treatment changed when their cases are reviewed by National Cancer Institute-designated comprehensive cancer centers.

Heart transplantation research shows that some patients, who receive a transplant, have been misdiagnosed. Often these patients would have benefitted more from less invasive therapy.

- ***Help you in identifying doctors and hospitals that are renown for their skill in treating your specific condition.***

At some sophisticated centers, more than 50 percent of patients referred for heart transplants, are treated medically. They don't need a transplant; they just need different medicine.

- ***Help you access the most successful transplant programs and transplant teams.***

Patients treated by the most successful transplant teams have better than expected outcomes; these better outcomes are not a matter of chance -- they reflect higher quality patient management.

- ***Provide information about all possible treatments that could potentially benefit.***

Patients are unique and what one patient decides is "right" for him or her may not be the best treatment for someone else — even when both individuals suffer from the same condition.

- ***Help you or your family access medical facilities that are experienced in providing the most up-to-date effective treatment for your condition.***

Often patients don't get the most up to date treatment; this happens more frequently than most people would think. For example: One US Government-funded study found that 37 percent of patients with breast cancer, 20 percent of patients with Hodgkin's disease, 25 percent with lung cancer, and 60 percent with rectal cancer did not receive the best possible treatment.

- ***Provide you with educational material about your condition and also center outcome data so you can choose the best center to treat your condition.***

Government-sponsored and other research in peer-reviewed medical journals shows that you are more likely to have a good outcome when an experienced medical team performs your transplant. This is true even for very sick patients who require more complex medical care. Through this benefit, patient out-

come data can be made available for different types of transplants at specific centers.

- ***Provide personal support for patients and their families, including discounted travel and lodging and (if appropriate and authorized) an on-site travel companion.***

Sometimes patients have to travel to receive the care that is most appropriate for them. Many people feel they need help in a strange city or at a new medical center. Depending on the center, at your request, someone can meet you; take you to your appointments; and provide assistance during your first few days. If you are alone or a family member is ill, extra help can be important.

- ***Assistance with medical referrals.***

It is difficult for many people to ask their doctor for a referral to a different doctor or medical center. Some patients are too embarrassed to make such a request. Others even hesitate to ask questions about their treatment because they think it will upset their doctor.

We can help you ask your doctor for a referral or help you self-refer to one of our specially selected centers. We can help with transferring records and ensuring that your primary doctor is kept informed about your progress.



Why Have a Special Transplant Resource?

Organ and bone marrow transplants are highly sophisticated treatments that save or prolong many lives. Although transplants can improve the quality of life, most patients, who receive a transplant, must be closely followed by medical specialists and take daily medications for the rest of their lives.

Unfortunately, some patients undergo transplantation when another less aggressive treatment would have helped them more. Others do not have a good outcome because their medical conditions are such that the risk of transplantation outweighs the potential benefit.

And there are patients, who have transplant procedures performed by inexperienced medical teams. Researchers have found that undergoing transplantation at an inexperienced transplant center can increase the chance of a poor outcome.

Because you and your family are very important, your coalition is making a special transplant resource available to you and family members. Use of this benefit is voluntary.

The objective is to offer a resource for patients and families that are confronted with serious illness. ***Are there other treatment options somewhere? Is this diagnosis correct? How can I find out more about my problem?***

To meet the unique needs of individuals suffering from catastrophic illness, we identify special transplant centers for adults, children and adolescents.

Advantages and key features include

- ***The most appropriate treatment for the patient's condition.***
- ***Access to the most successful transplant programs and teams. Patients treated by the most successful teams have better than expected outcomes; these better outcomes are not a matter of chance – they reflect higher quality patient management.***
- ***Improved access to new, innovative treatments.***
- ***Emphasis on full rehabilitation – back to normal life.***
- ***Personal support for patients and their families, including discounted travel and lodging.***
- ***Reduced medical costs by ensuring access to doctors and hospitals that have significantly better than expected results and systems to anticipate and prevent quality problems.***

A Special Confidential Resource for You

The objective is to offer a confidential resource for patients and families that are confronted with serious illness. Are there other treatment options somewhere? Is this diagnosis correct? How can I find out more about my problem?

More Questions or Concerns?

If you or a family member have any questions or want more information about [this resource](#), please call

1 877 961 1120 (toll free)

Or send a Fax to

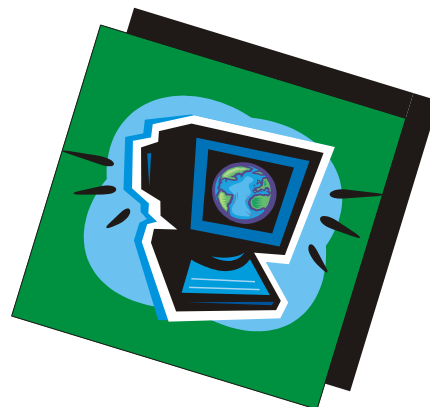
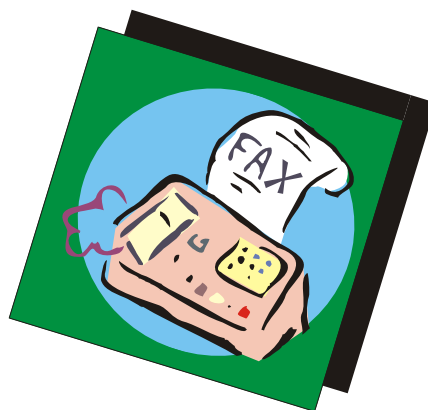
1 251 961 3151

Or send an email

hsminc@gulftel.com

Or visit our website

<http://www.hsminc.net>



Health Systems Management, Inc.
Transplant Referral and Information Resources
Personalized Supporting Services

Tel: (877) 961 1120 (toll free)

Fax: (251) 961 3151

Email: hsminc@gulftel.com

Website: <http://www.hsminc.net>

